

Wireless Announcer

Perfect solution of helmet speaker & effective way of stand alone receiver

Support up to 4 channels frequency programming along with the CTCSS code per channel

- WA-422 ; 422MHz \pm 3MHz programmable
- WA-446 ; 446MHz \pm 3MHz programmable
- WA-465 ; 465MHz \pm 3MHz programmable



Wireless Announcer - Helmet Speaker



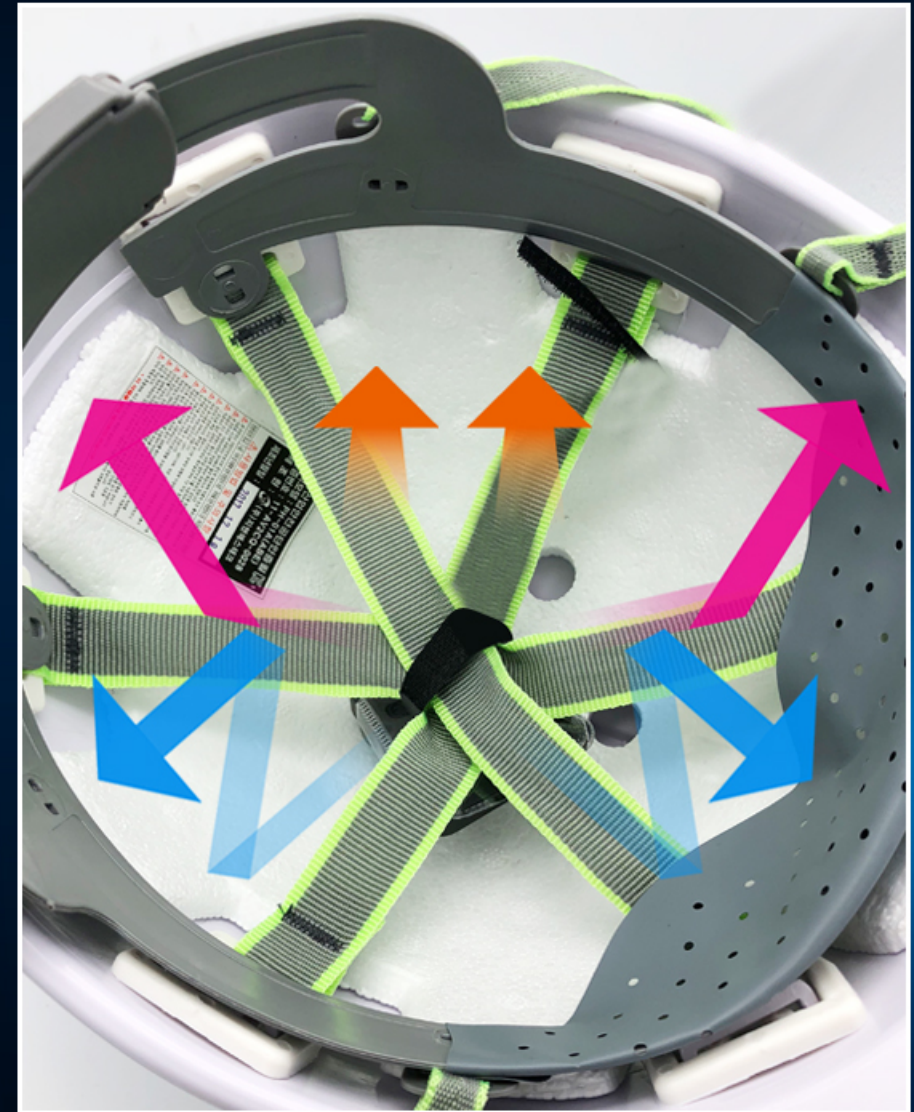
Available to give instructions to the constructors at anytime and at any remote place over 2~3km distance



Simple to install it at inner side of helmet and provides loud & clear sound quality thru the sound reflection effectiveness in the helmet

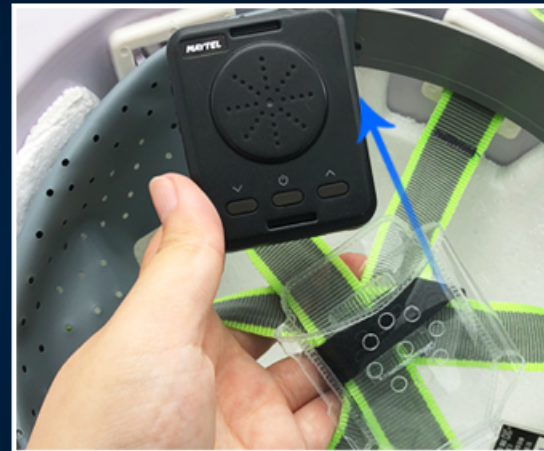
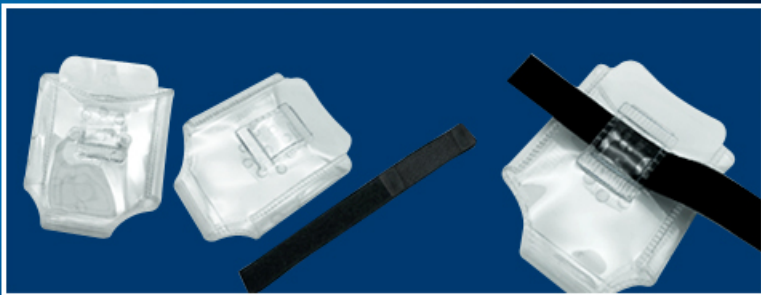


Convenient 20 bay or 40 bay drop in charge or USB micro socket charging system



Wireless Announcer - Helmet Speaker

Easy to install in the helmet using the helmet pouch with velcro and push in / out the device for recharge



Wireless Announcer - Stand Alone Receiver



Wide range of frequency coverage via P/C programming

WA-422 ; 422MHz \pm 3MHz,
WA-446 ; 446MHz, \pm 3MHz,
WA-465 ; 465MHz \pm 3MHz



Extremely light weight as 20g only and easy to carry on the neck
or clip the device at any convenient place



CTCSS Code and squelch tail selectable via P/C programming
Setting the squelch tail frequency equal between its Transmitter
and Wireless announcer gives the delete of white noise
for the moment when transmitting is ended



Cost effective way of group hearing solution
and also convenient 20 bay or 40 bay drop in charge system



Wireless Announcer - Perfect solution of helmet speaker & Effective way of stand alone receiver



20 bay drop in station

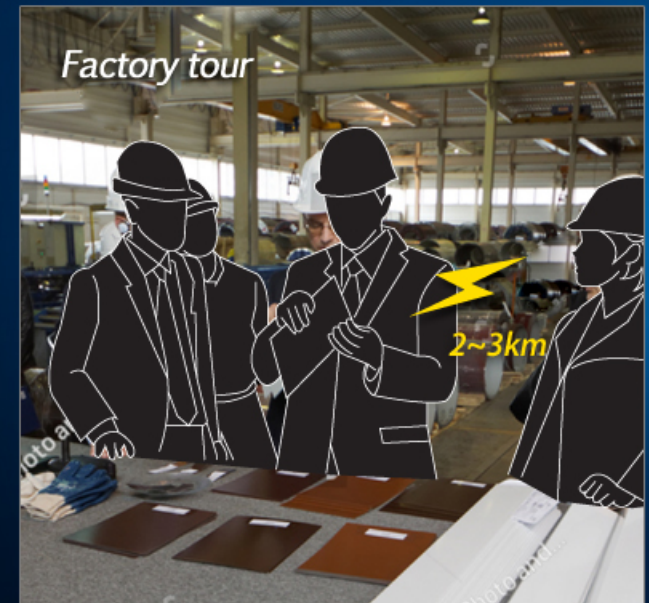
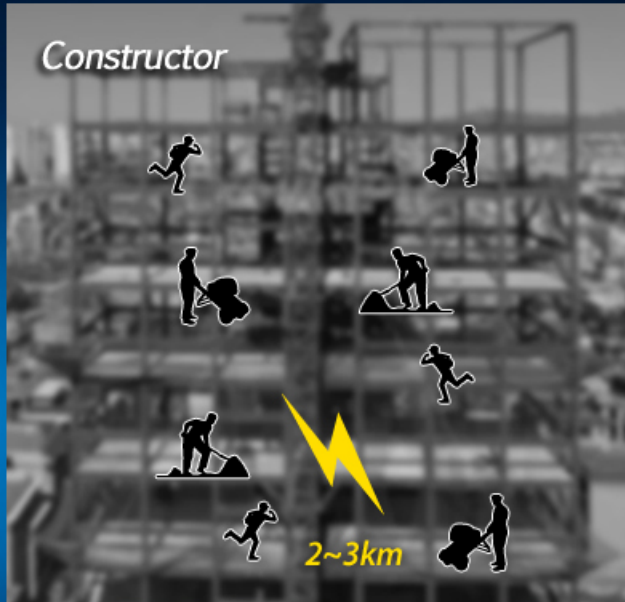


20 bay drop in suit case



40 bay drop in suit case

Why Wireless Announcer?



Wireless Announcer

Retail package with standard accessories in the box



WA-446



HP-01, Helmet pouch with velcro



ER-01M, Mono Earphone



NS-01, Neck Strap Lanyard



UC-01, USB Charging cable



User's manual



Size ; 117 x 40 x 92 mm

Technical specification

Frequency	; WA-422; 422MHz +/- 3MHz	Audio output	; 500mW @ 5% TH
	WA-446; 446MHz +/- 3MHz	Battery	; Li-Ion, 700mA
	WA-465; 465MHz +/- 3MHz	Battery operating time	; 15 hours
Channels	; 4 CHs pre-programmable	Stand-by time	; 48 hours
CTCSS	; Pre-programmable per CH	Operating temperature	; -10C ~ +50C
ACR	; 55dB typ.		
IMD	; 55dB typ.		

Made in Korea



Wireless Announcer

Optional Accessories



*CC-01W,
Carrying case with belt clip*



*HP-01,
Helmet pouch with velcro*



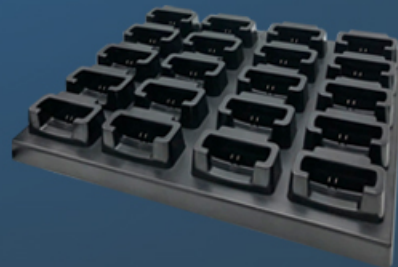
*PC-01W,
P/C Programmable cable*



*LC-01W,
Line-In cable*



*CS-02M,
2 bay drop in charger*



*CS-20M
20-bay drop in charger*



*CB-20M
20-bay drop in charge suit case*



*CB-40M
40-bay drop in charge suit case*

Wireless Announcer

***- Helmet Speaker &
- Stand Alone Receiver***

Thank you